

Prime Office Site
43rd Ave & Normandy St.
Bismarck, ND

For Sale



Property Details

- Land Size - 6.55 Acres
- Superb View from the Site
- Great site for Corporate Location
- Perfect for Institutional Uses
- Easy access to major streets - Highways
- Lot can be subdivided for multiple Buildings or Office Park
- Located in the heart of the rapidly growing north side of Bismarck
- Located in the new office corridor
- Design and Build to Suit options available
- Asking Price - \$7.95 / sq. ft.

Contact Information

Chuck Huber
701-222-0232 or 701-391-9575
Chuck@BismarckRealty.com

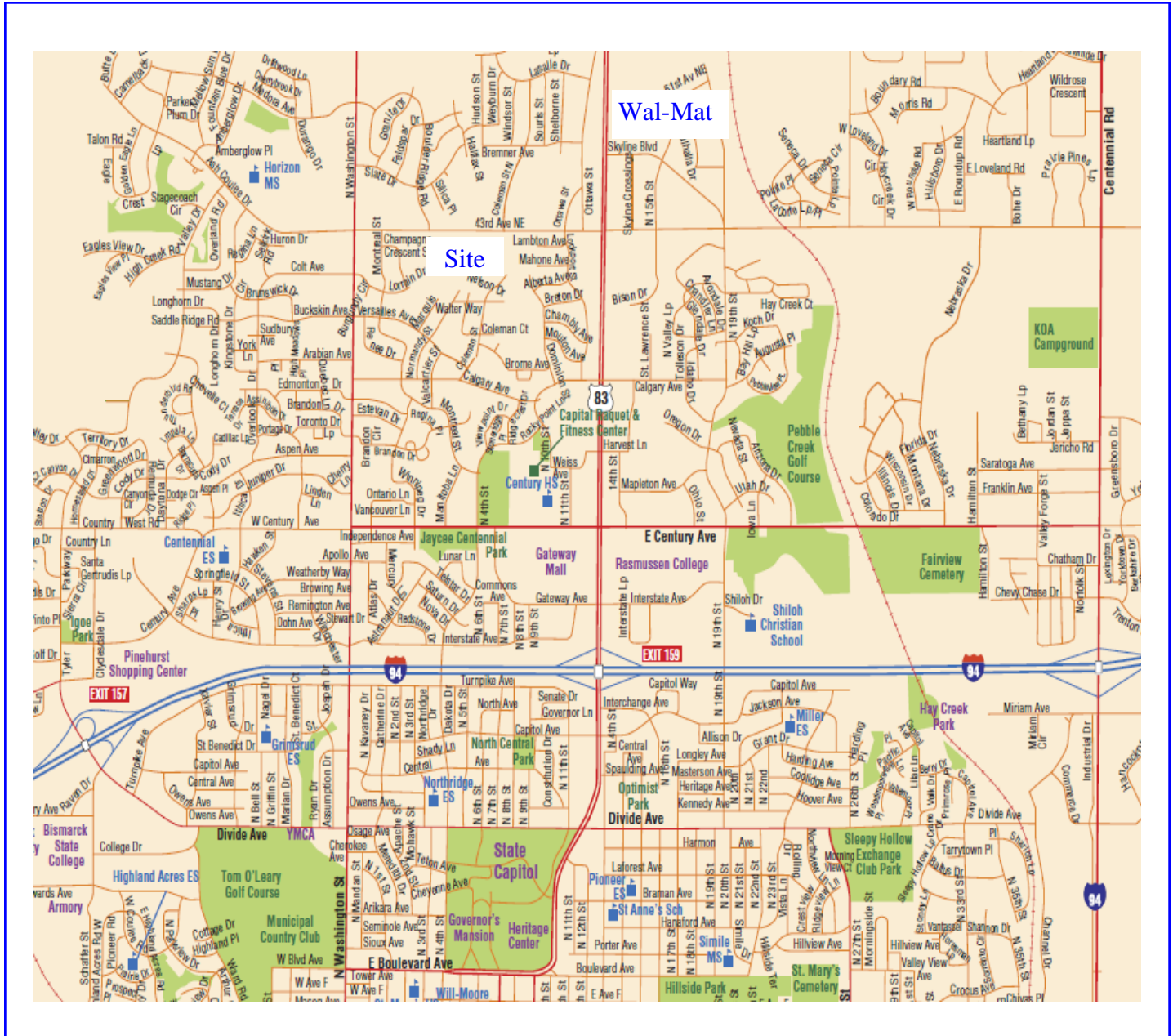


501 E. Main Ave. Bismarck, ND 58501

All information herein has been obtained from sources deemed reliable. However, no warranty or guarantee is made as to the accuracy of the information

Prime Office Site 43rd Ave & Normandy St. Bismarck, ND

For Sale



Contact Information

Chuck Huber
701-222-0232 or 701-391-9575
Chuck@BismarckRealty.com

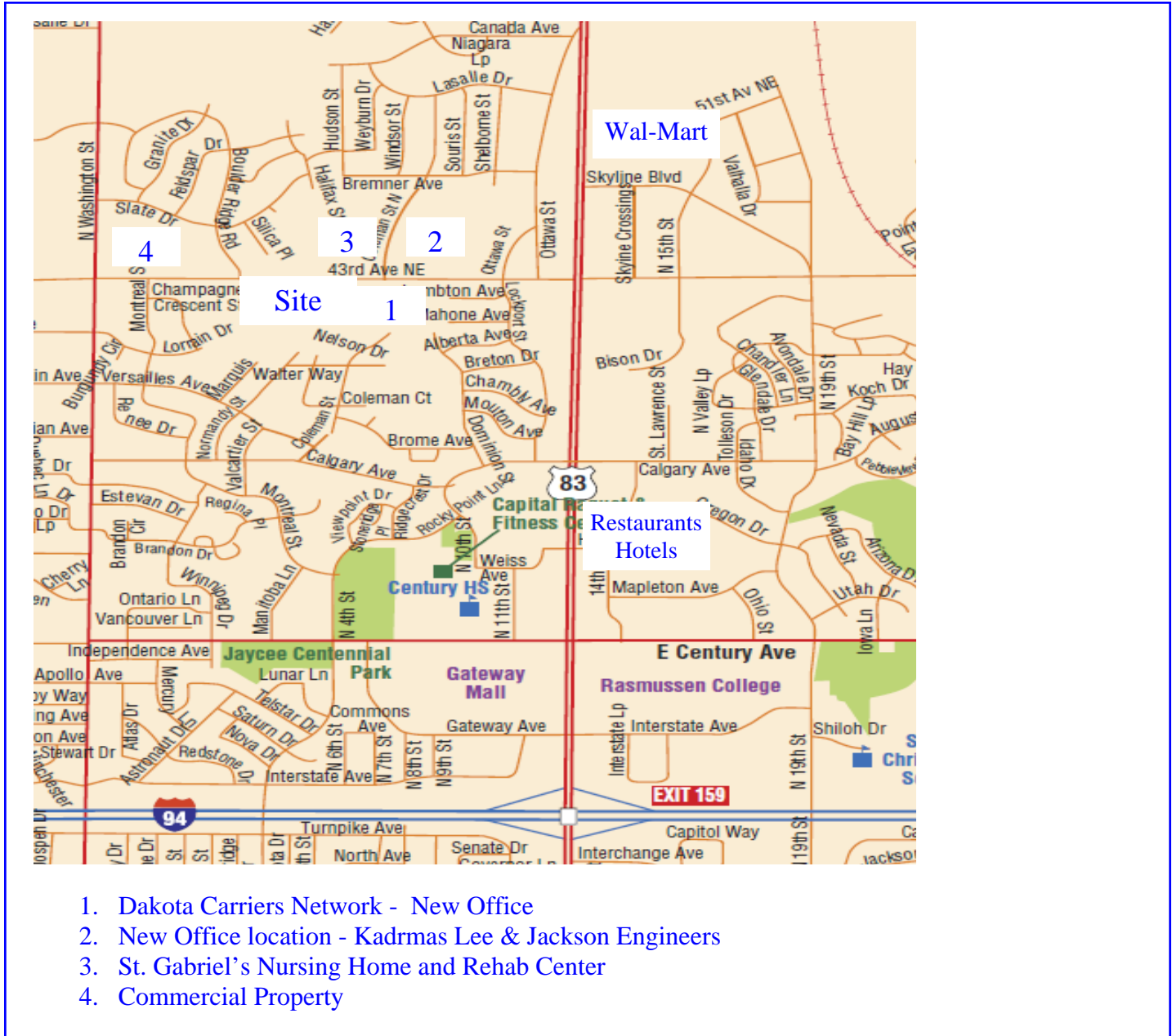


501 E. Main Ave. Bismarck, ND 58501

All information herein has been obtained from sources deemed reliable. However, no warranty or guarantee is made as to the accuracy of the information

Office Park Site 43rd Ave & Normandy St. Bismarck, ND

For Sale - Lease - Build to Suit



1. Dakota Carriers Network - New Office
2. New Office location - Kadrmas Lee & Jackson Engineers
3. St. Gabriel's Nursing Home and Rehab Center
4. Commercial Property

Contact Information

Chuck Huber
701-222-0232 or 701-391-9575
Chuck@BismarckRealty.com



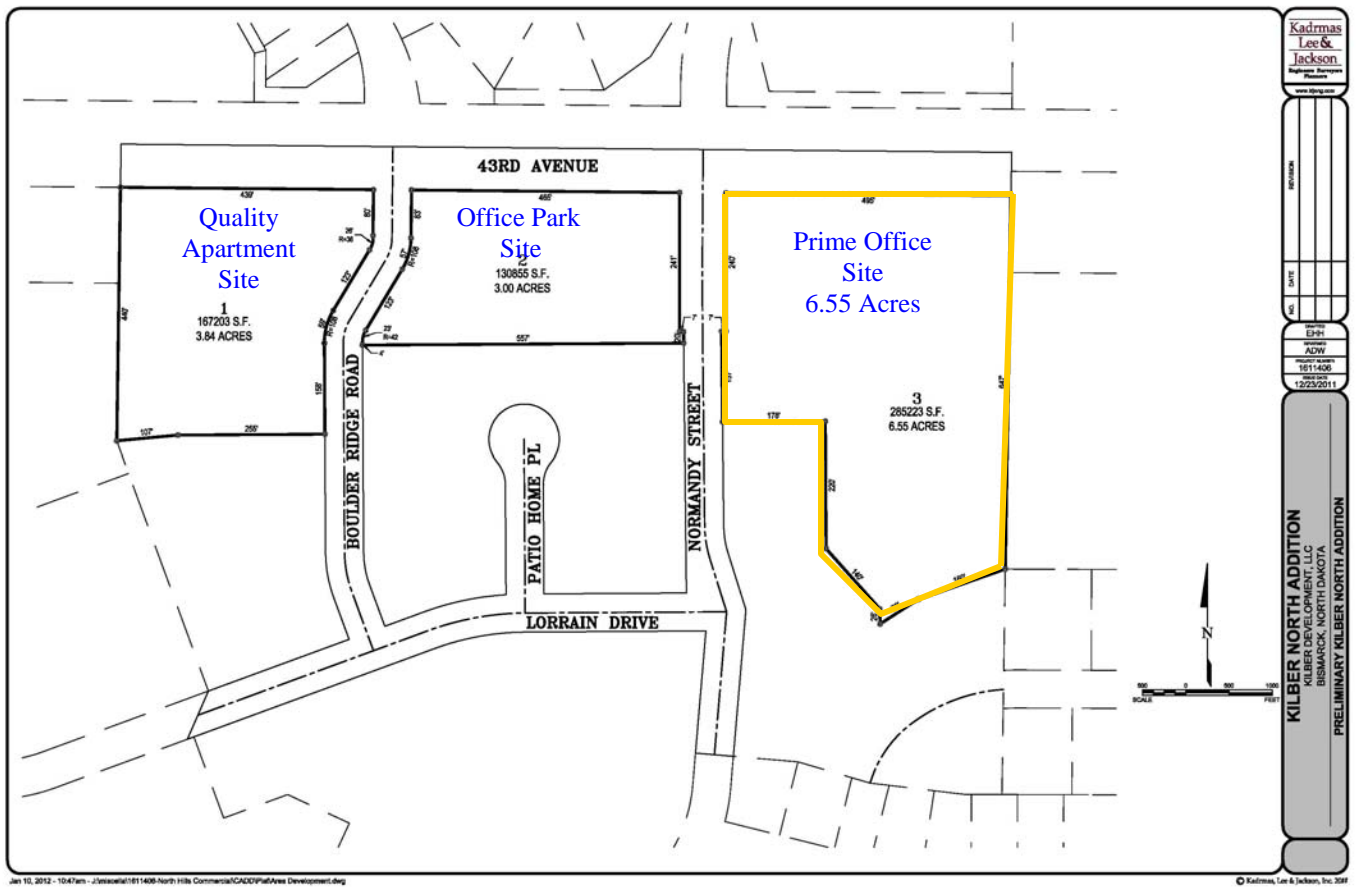
501 E. Main Ave. Bismarck, ND 58501

All information herein has been obtained from sources deemed reliable. However, no warranty or guarantee is made as to the accuracy of the information

**Prime Office Site
43rd Ave & Normandy St.
Bismarck, ND**

For Sale

Preliminary Plat
Kilber North Addition



Kadmas Lee & Jackson
Registered Surveyors
Bismarck, ND
www.klj.com

REVISIONS
DATE
BY
APP'D
ADW
1811408
12/29/2011

KILBER NORTH ADDITION
KILBER DEVELOPMENT, LLC
BISMARCK, NORTH DAKOTA
PRELIMINARY KILBER NORTH ADDITION

© Kadmas, Lee & Jackson, Inc. 2011

Contact Information

Chuck Huber
701-222-0232 or 701-391-9575
Chuck@BismarckRealty.com

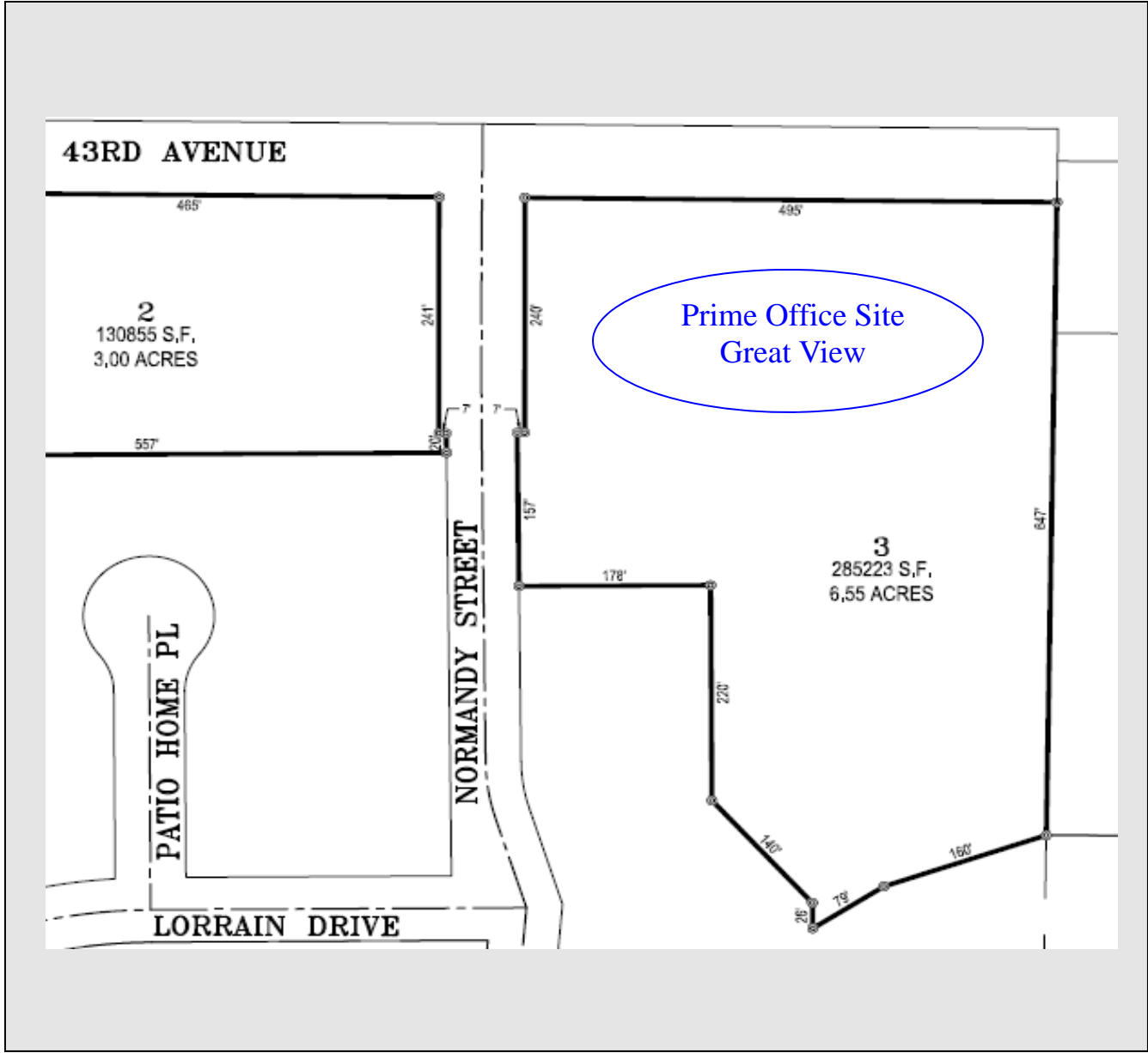


501 E. Main Ave. Bismarck, ND 58501

All information herein has been obtained from sources deemed reliable. However, no warranty or guarantee is made as to the accuracy of the information

**Prime Office Site
43rd Ave & Normandy St.
Bismarck, ND**

For Sale



Contact Information

Chuck Huber
701-222-0232 or 701-391-9575
Chuck@BismarckRealty.com

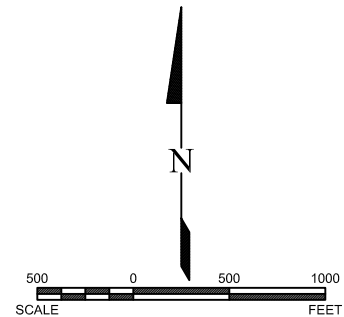
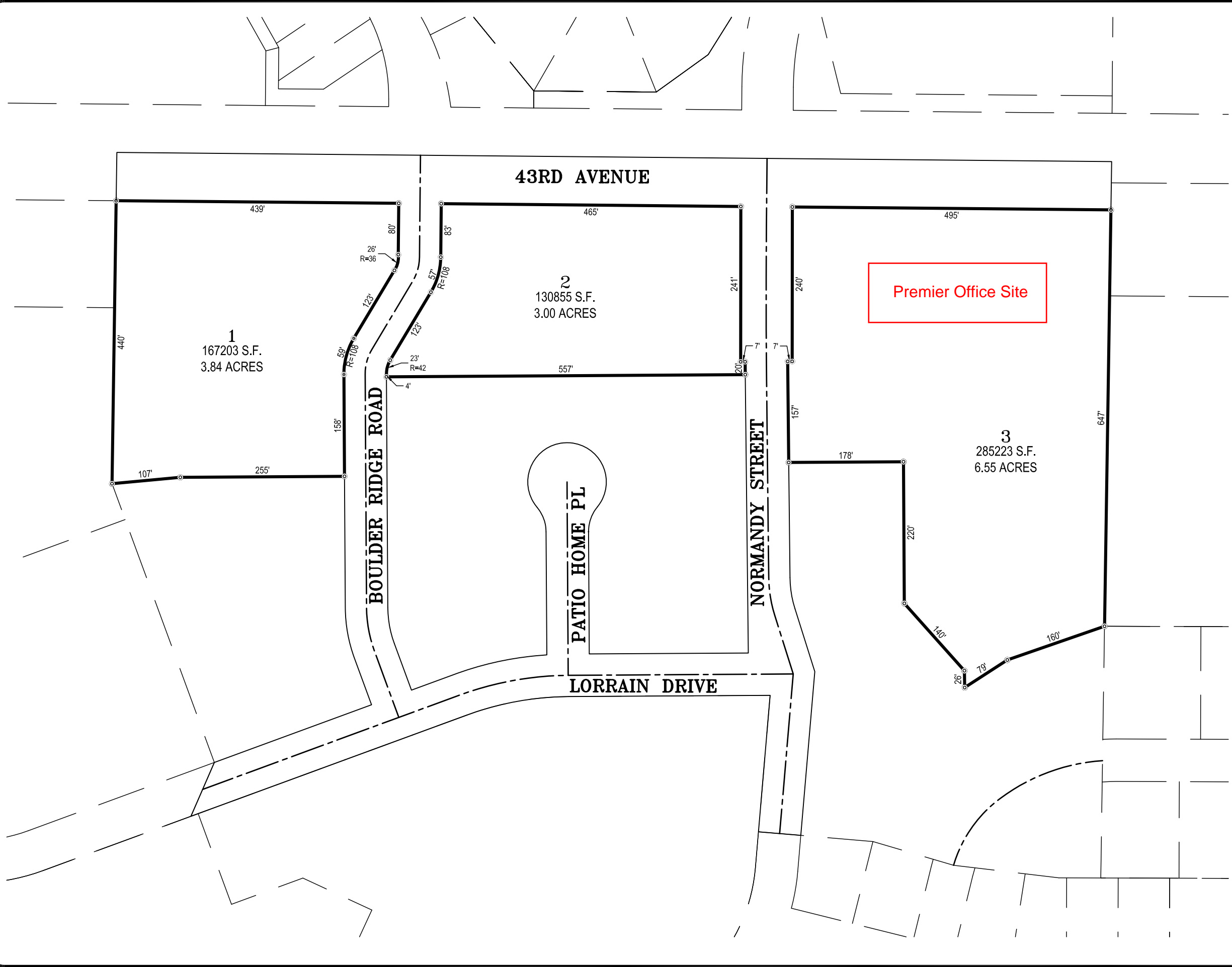


501 E. Main Ave. Bismarck, ND 58501
All information herein has been obtained from sources deemed reliable. However, no warranty or guarantee is made as to the accuracy of the information

NO.	DATE	REVISION

DRAFTED
EHH
REVIEWED
ADW
PROJECT NUMBER
1611406
ISSUE DATE
12/23/2011

KILBER NORTH ADDITION
KILBER DEVELOPMENT, LLC
BISMARCK, NORTH DAKOTA
PRELIMINARY KILBER NORTH ADDITION



Office Park Site
43rd Ave & Normandy St.
Bismarck, ND

For Sale - Lease - Build to Suit



Property Details

- Land Size - 3 Acres
- Will Build to Suit to your Office Needs
- Purchase your own Office Site
- Professional Office Park Design
- Easy access to major streets - Highways
- Lot can be subdivided for multiple Buildings or Office Park
- Located in the heart of the rapidly growing north side of Bismarck
- Located in the new office corridor
- Design and Build to Suit options available
- Land Asking Price - \$7.95 / sq. ft.

Contact Information

Chuck Huber
701-222-0232 or 701-391-9575
Chuck@BismarckRealty.com

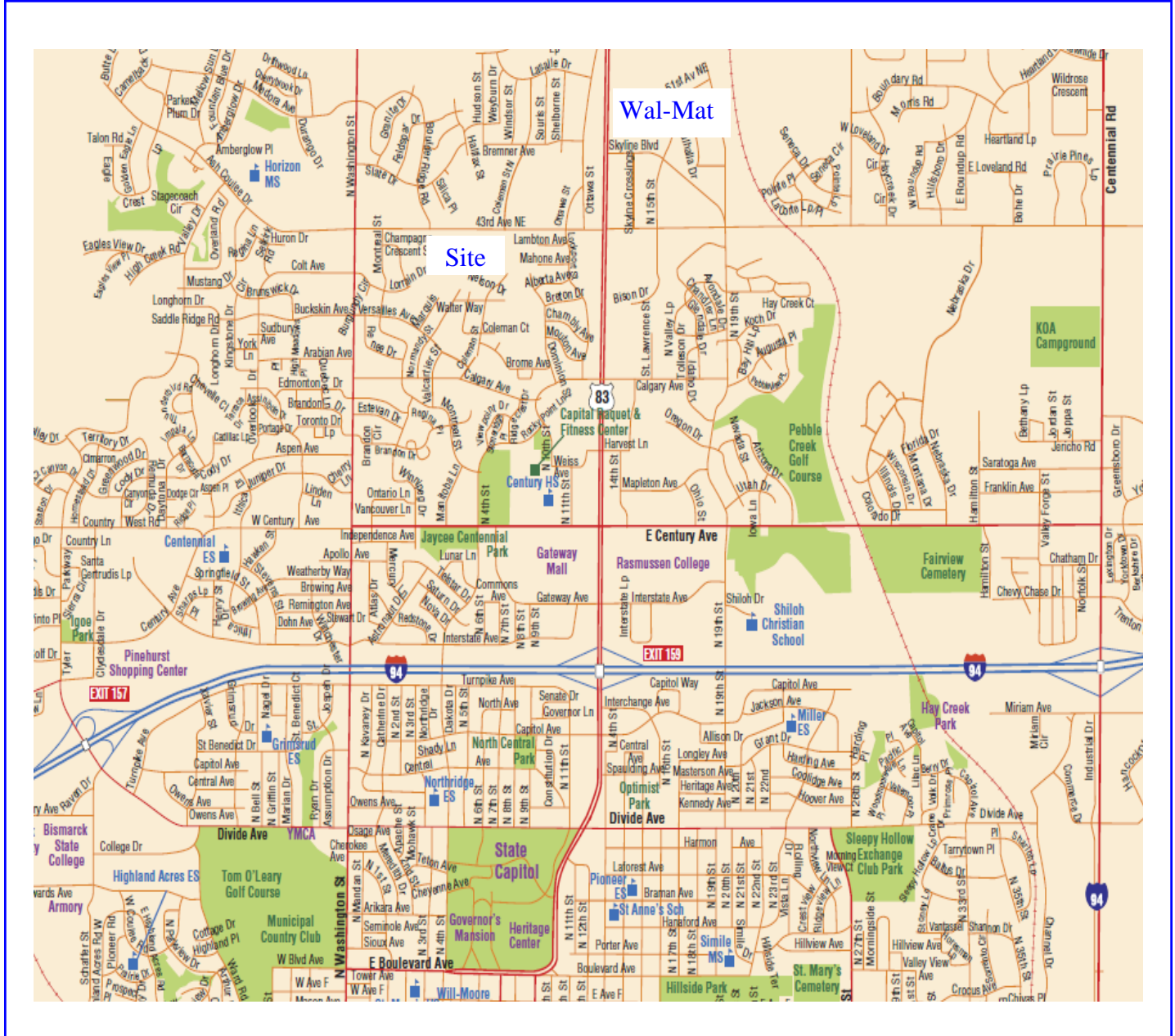


501 E. Main Ave. Bismarck, ND 58501

All information herein has been obtained from sources deemed reliable. However, no warranty or guarantee is made as to the accuracy of the information

Office Park Site 43rd Ave & Normandy St. Bismarck, ND

For Sale - Lease - Build to Suit



Contact Information

Chuck Huber
701-222-0232 or 701-391-9575
Chuck@BismarckRealty.com

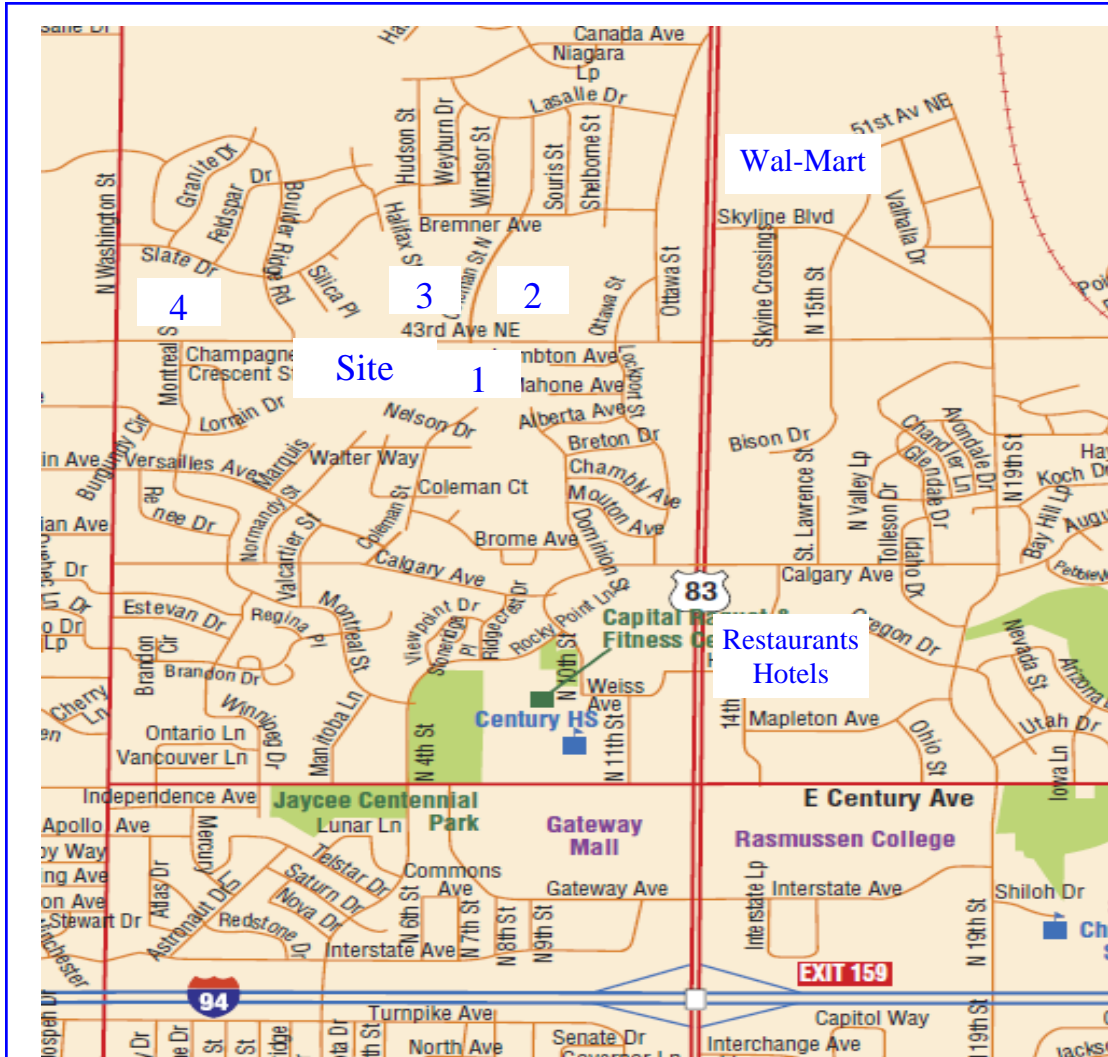
BISMARCK  **REALTY CO.**

501 E. Main Ave. Bismarck, ND 58501

All information herein has been obtained from sources deemed reliable. However, no warranty or guarantee is made as to the accuracy of the information

Office Park Site 43rd Ave & Normandy St. Bismarck, ND

For Sale - Lease - Build to Suit



1. Dakota Carriers Network - New Office
2. New Office location - Kadrmas Lee & Jackson Engineers
3. St. Gabriel's Nursing Home and Rehab Center
4. Commercial Property

Contact Information

Chuck Huber
701-222-0232 or 701-391-9575
Chuck@BismarckRealty.com

BISMARCK  REALTY CO.

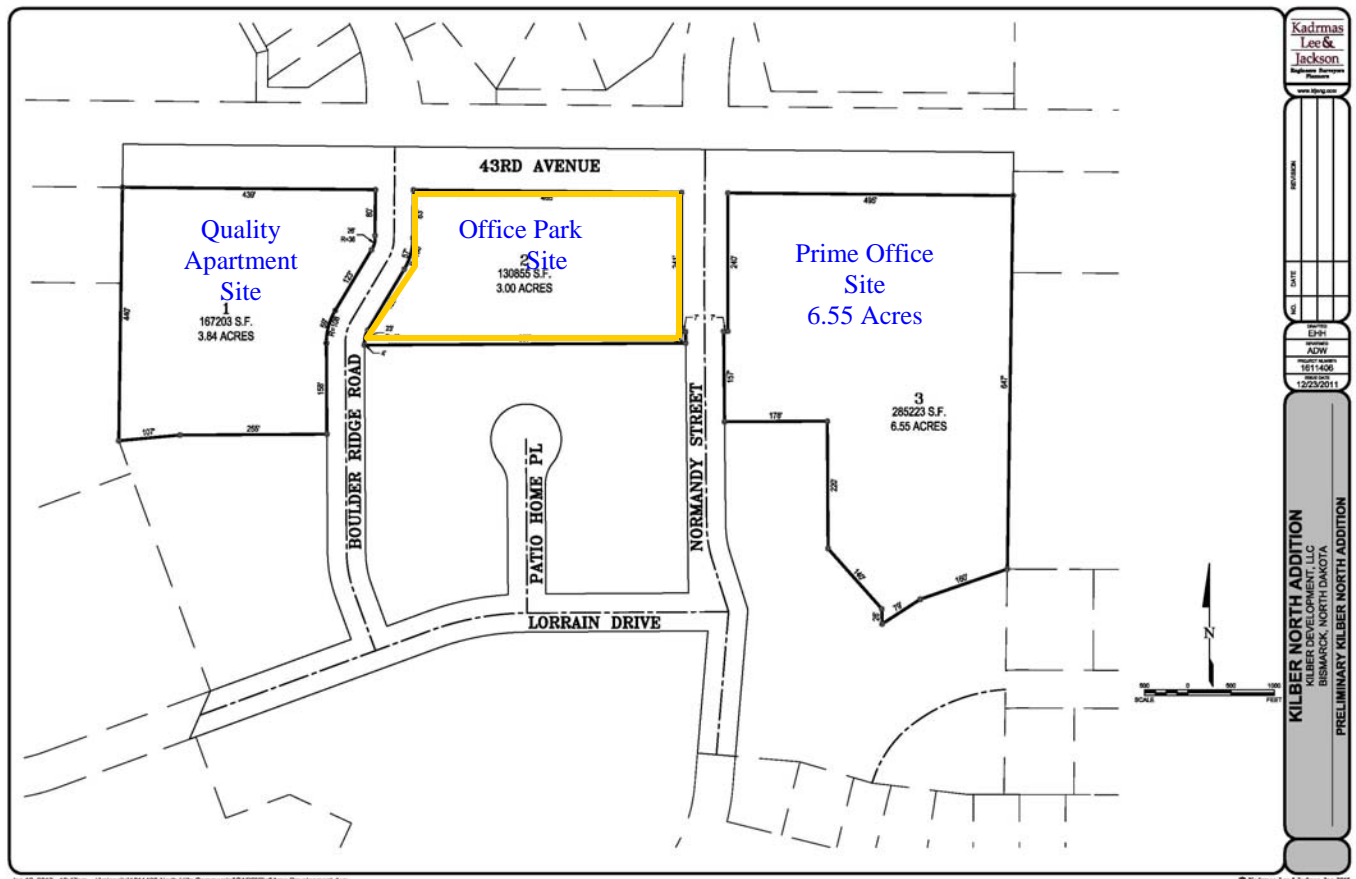
501 E. Main Ave. Bismarck, ND 58501

All information herein has been obtained from sources deemed reliable. However, no warranty or guarantee is made as to the accuracy of the information

Office Park Site 43rd Ave & Normandy St. Bismarck, ND

For Sale - Lease - Build to Suit

Preliminary Plat Kilber North Addition



Contact Information

Chuck Huber
701-222-0232 or 701-391-9575
Chuck@BismarckRealty.com



501 E. Main Ave. Bismarck, ND 58501

All information herein has been obtained from sources deemed reliable. However, no warranty or guarantee is made as to the accuracy of the information

NO.	DATE	REVISION

DRAFTED EHH
REVIEWED ADW
PROJECT NUMBER 1611406
ISSUE DATE 12/23/2011

KILBER NORTH ADDITION
KILBER DEVELOPMENT, LLC
BISMARCK, NORTH DAKOTA
PRELIMINARY KILBER NORTH ADDITION

