

## Northern Plains Commerce Centre

The Northern Plains Commerce Centre (NPCC) is a 243-acre industrial, ag-processing, warehouse, distribution and technology park with immediate access to road and rail transportation infrastructure located in Bismarck, North Dakota. The Centre is conveniently located adjacent to the Bismarck Airport allowing for future air freight expansion.

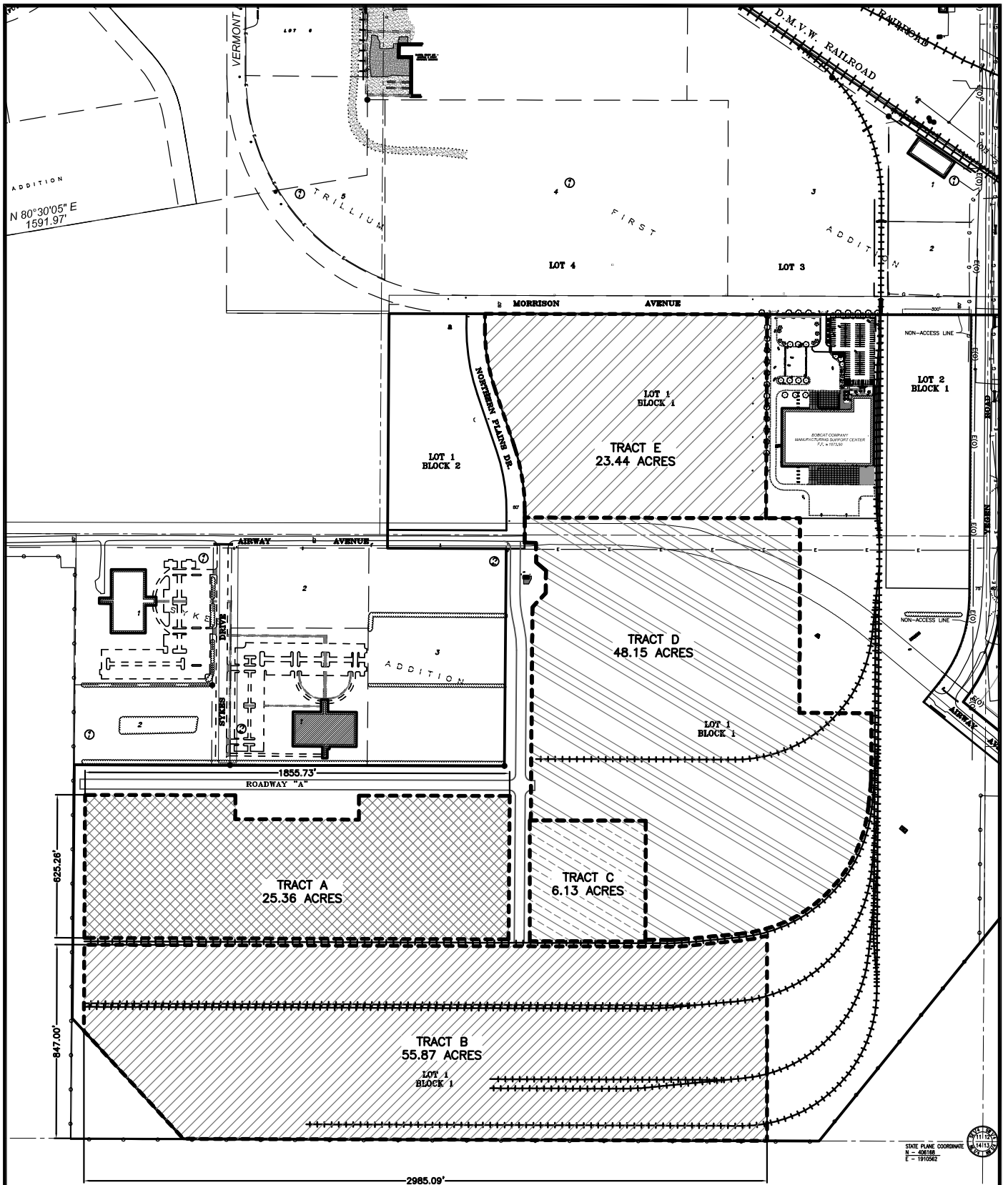
The NPCC, designed as a transload facility with intermodal capabilities, allows shippers access to all modes of rail including intermodal container, boxcar, hopper car, flatcar, tanker car, etc. Class I rail service is provided by both BNSF and Canadian Pacific with interrail connections provided by Dakota Missouri Valley & Western, a local operated short-line railroad. Numerous regional and national trucking firms provide over-the-road ground transportation options with direct access to U.S. Interstate 94 and U.S. Highway 83. The transportation infrastructure available within the NPCC allows companies to improve their ability to efficiently distribute products both within the Northern Plains region and globally.

Developed by the City of Bismarck, the NPCC has land parcels of various sizes available for lease or purchase with either direct or indirect rail access. The conceptual diagram on the following page illustrates the tract layout of the Northern Plains Commerce Centre. At the current time, there is one spur with capacity for 12 railcars with a 4.5 acre fenced storage facility. Reloading services are available at the transload facility. Additional rail spurs will be built as volume demands

The NPCC will also allow provide loading and unloading services which will allow freight to be moved from truck to rail and rail to truck. These services will allow any shipper the ability to access the transportation amenities available within the Centre regardless of their location.

The NPCC is managed and operated by Mallory Alexander International Logistics, a global leader in transportation management and lead logistics services. Mallory Alexander offers a full array of supply chain services at this facility including international air and ocean transportation, loading and unloading of railcars and trucks, and storage and warehousing.

Bismarck, North Dakota is ideally located in the geographic center of North America, approximately 1,200 miles form Seattle and 800 miles form Chicago. Bismarck boasts an extremely well-educated and skilled workforce, excellent quality of life and strong local leadership. We invite you to learn more at [www.npccbismarck.com](http://www.npccbismarck.com) and [www.bmda.org](http://www.bmda.org).



# TRACT LAYOUT EXHIBIT

Kadmas  
Lee &  
Jackson  
Engineers Surveyors  
Planners