

WAREHOUSE / OFFICE BLDG
815 E Main Av – Bismarck ND

- Sales Price
\$535,000
- Building Size
13,105 sf (main)
2,560 sf (bsmt)
- Lot Size
26,600 sf
- Zoned CG
- Built in 1964
- Taxes: **\$6,885**
- No Special Assessments
- Corner Lot
- High Visibility

Contact Information:

Kyle Holwagner
701.400.5373
Kyle@DanielCompanies.com

Bill Daniel, CCIM
701.220.2455
Bill@DanielCompanies.com

Ann Sharp
701.220.0261
Ann@DanielCompanies.com

Daniel Companies
304 E Rosser Ave Suite 200
Bismarck ND 58501
701.223.8488
701.223.8860 fax

DanielCompanies.com

Broker does not guarantee the information describing this property. Interested parties are advised to independently verify the information through personal inspectors or with appropriate professionals.



The Leader In Commercial

815 E Main Av

- **Potential Uses**
 - **Medical**
 - **Entertainment**
 - **Service**
 - **Warehouse**
 - **Office**
 - **Professional**

- **Area Businesses Include**
 - **VUE Credit Union**
 - **St. Alexius Medical Center**
 - **MedCenter One**
 - **Hellman Brothers**
 - **Dakota Pharmacy**
 - **Interstate Battery**
 - **Pizza Hut**
 - **One Hour Martinizing**
 - **Terry's Health Products**
 - **Simonson Gas**

- **Interior Loading Docks**

- **Freight Elevator**

- **Oversized Electrical Service**

Broker does not guarantee the information describing this property. Interested parties are advised to independently verify the information through personal inspectors or with appropriate professionals.



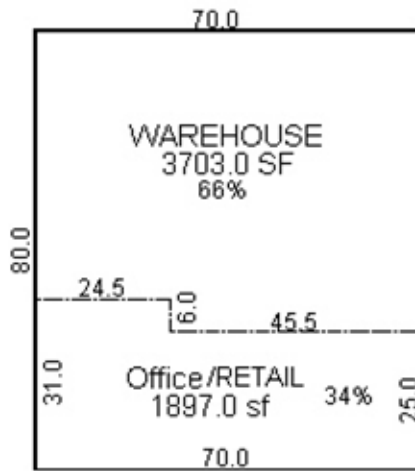


The Leader In Commercial

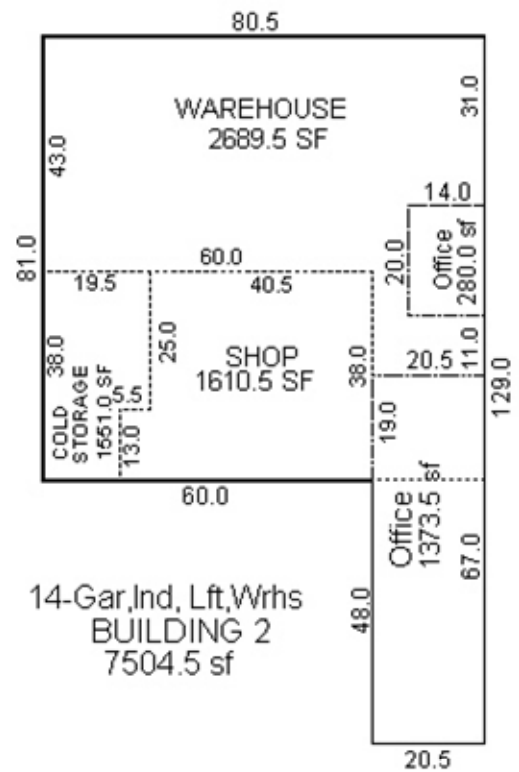
815 E Main Av



815 E Main Av



13 - Stores, Com Blds
BUILDING 1
5600.0 sf



14-Gar, Ind, Lft, Wrhs
BUILDING 2
7504.5 sf





The Leader In Commercial





The Leader In Commercial



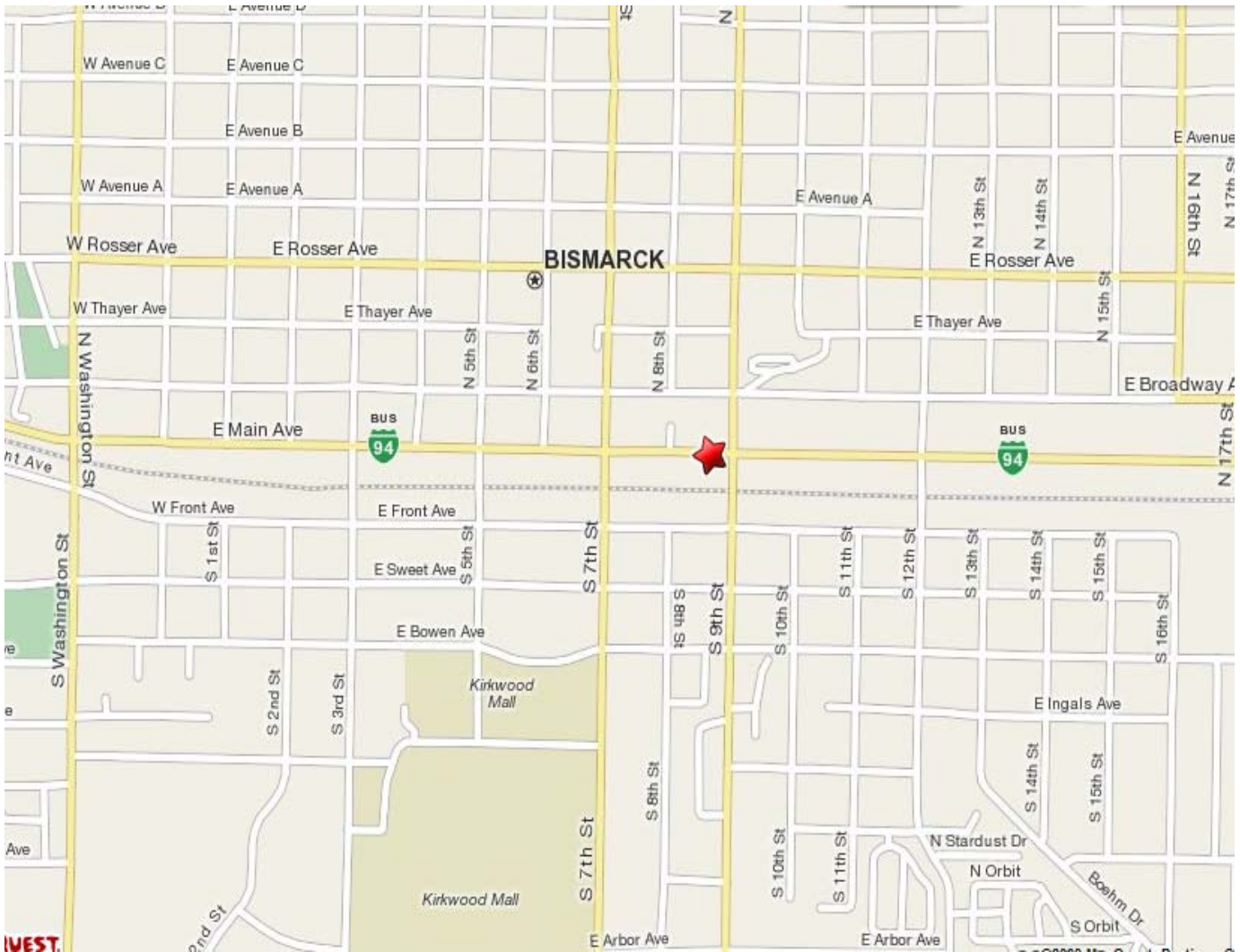
RETAIL • INVESTMENTS • OFFICE • INDUSTRIAL • SITE SELECTION • LEASING • BUILD TO SUIT • BROKERAGE



DANIEL COMPANIES

The Leader In Commercial

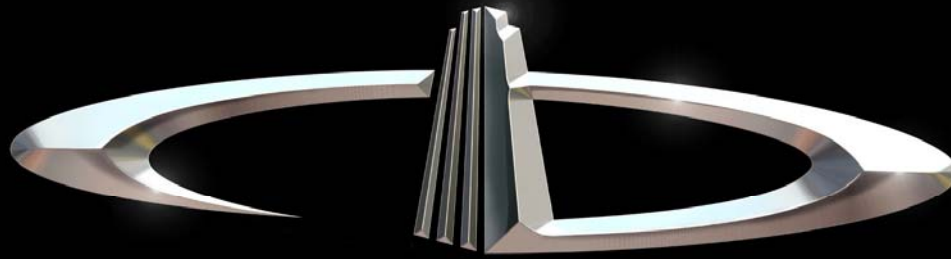
815 E Main Av



FOR SALE

DANIEL COMPANIES
The Leader in Commercial
701-223-8488

RETAIL • INVESTMENTS • OFFICE • INDUSTRIAL • SITE SELECTION • LEASING • BUILD TO SUIT • BROKERAGE



DANIEL COMPANIES

The Leader in Commercial Real Estate

Serving commercial real estate customers with unmatched market knowledge, experience, and well-deserved reputation for integrity.

They know the Bismarck-Mandan commercial real estate market better than anyone. This powerful team delivers powerful results



Bill Daniel, CCIM
220-0261



Kyle Holwagner
400-5373



Ann Sharp, GRI
220-0261

304 E. Rosser Ave., Suite 200 Bismarck, ND 58501

Office: 701-223-8488 DanielCompanies.com

RETAIL • INVESTMENTS • OFFICE • INDUSTRIAL • SITE SELECTION • LEASING • BUILD TO SUIT • BROKERAGE